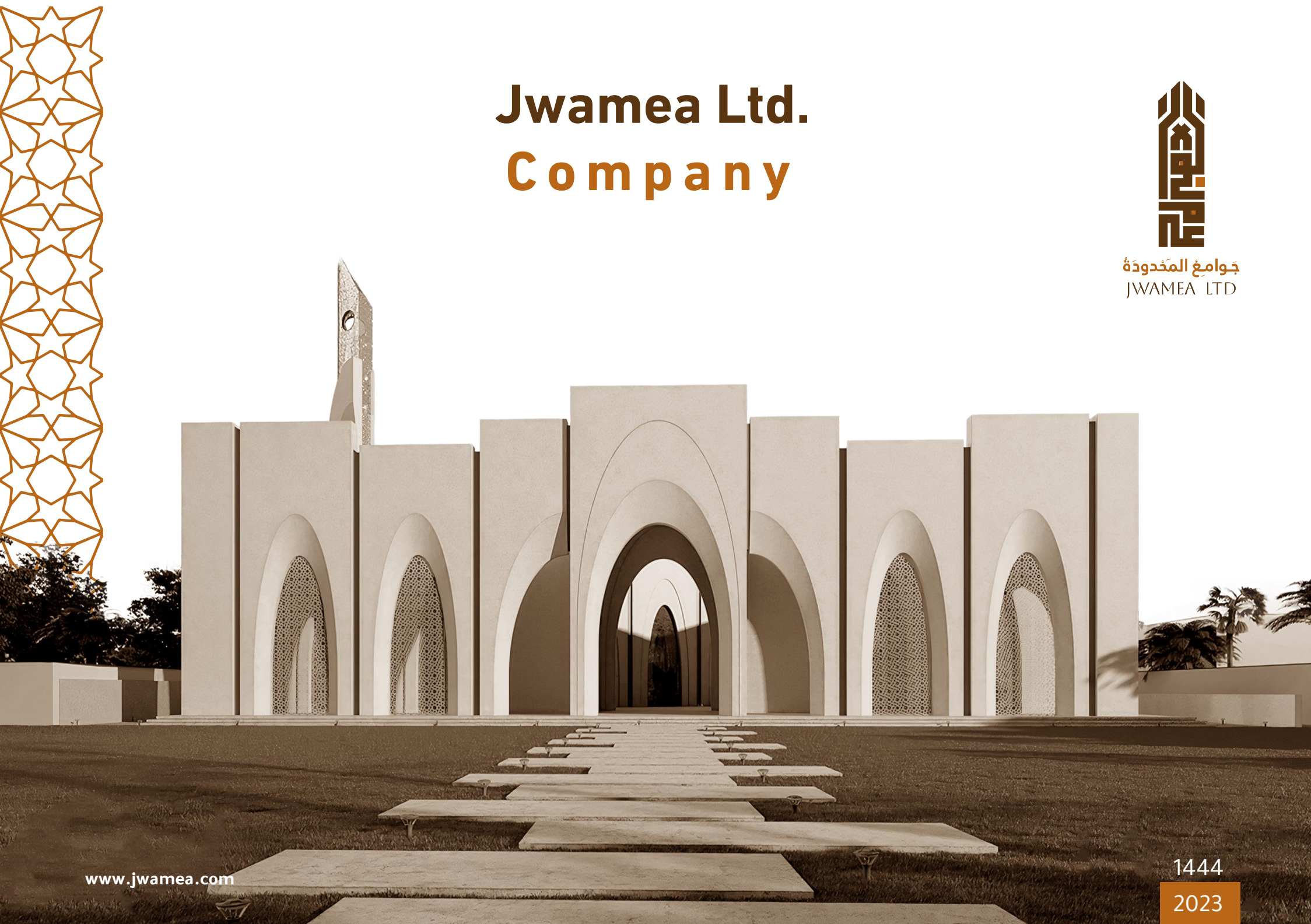


Jwamea Ltd. Company



جوامع المَحْدودَة
JWAMEA LTD



بِسْمِ اللَّهِ الرَّحْمَنِ الرَّحِيمِ

Contents

President's Message

Who are we

Organizational Structure

Executive Team

Our Projects

Project Quality Implementation Procedures

Environmental Protection Plan

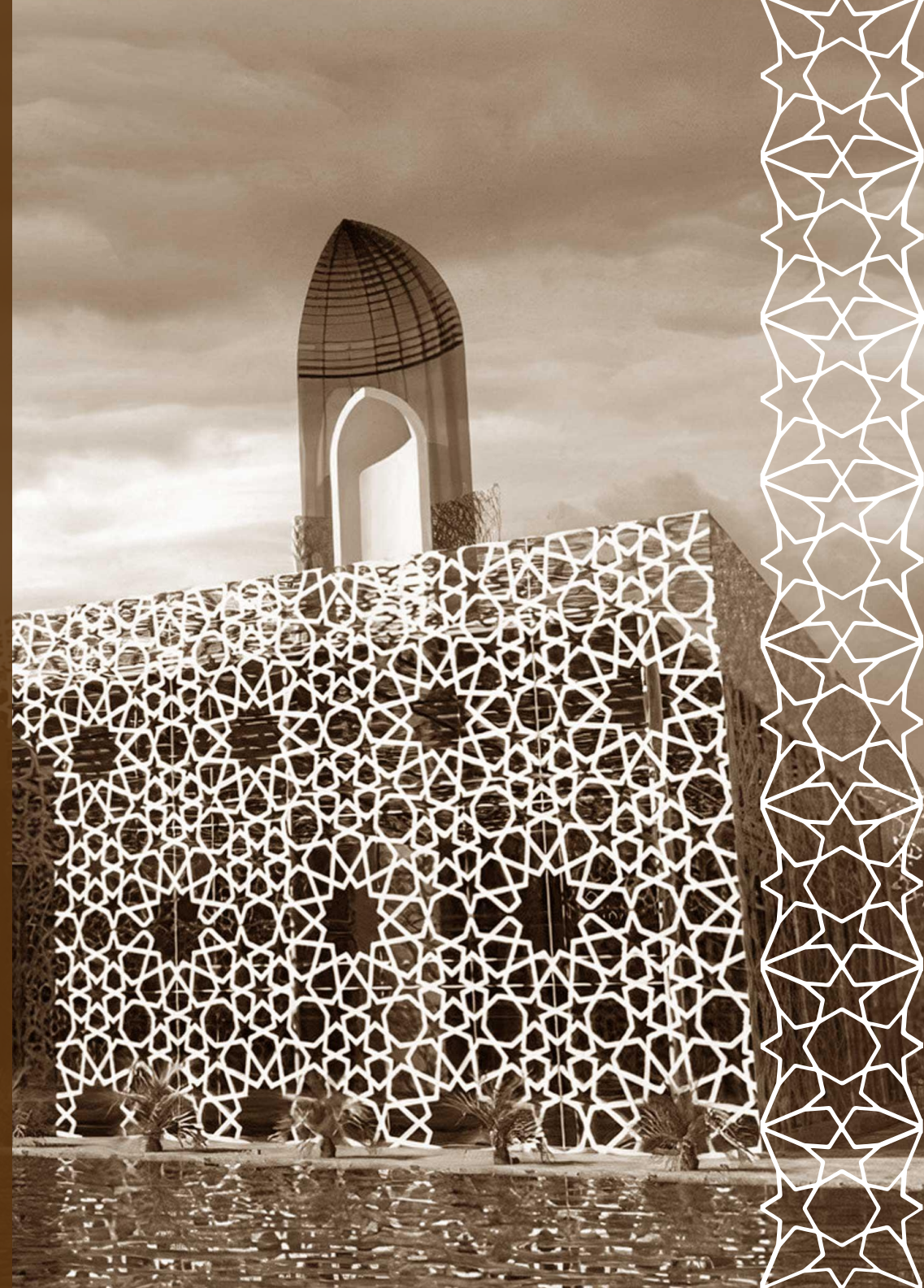
Health and Safety Management Plan

Top Suppliers

Samples of subcontractors and engineering offices

Official Documents

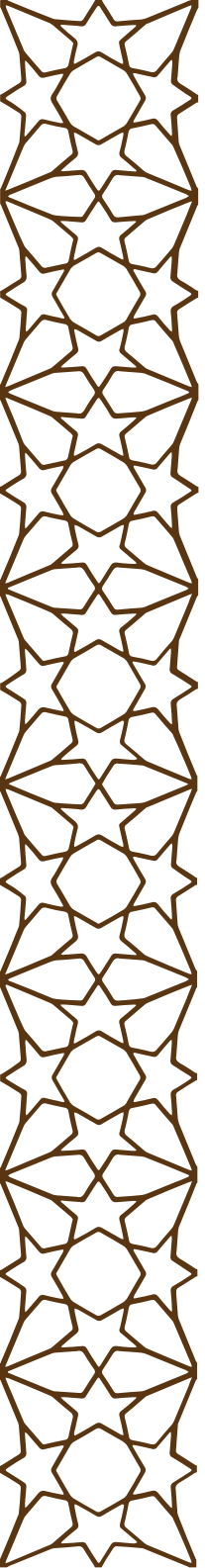
Contact Us





Chairman's Message



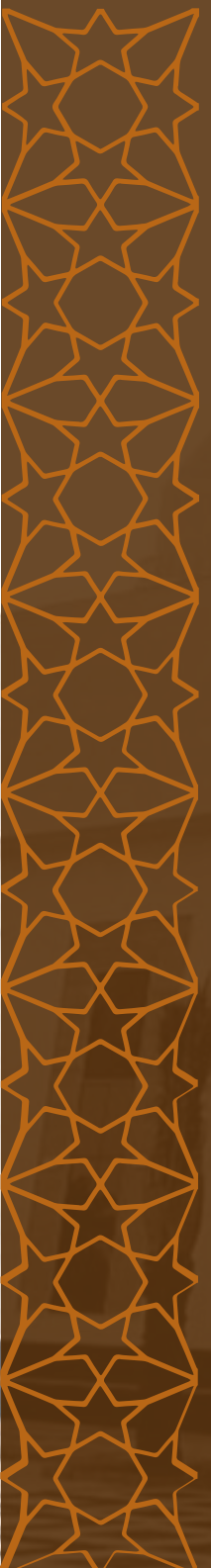


Our goal since the establishment of Jwamea Company is to become the leading company in the construction and architecture of Masajed using the best and most accurate architectural details which matches with our modern age. providing comfort and introducing artificial intelligence and modern technology while adhering to environmental health and safety standards and sustainability.

We at Jwamea Company have set our sights on providing comfort to worshipers, taking into account the quality of construction at the lowest costs and implementation in the shortest possible period of time.



President



Who are we

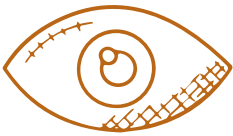
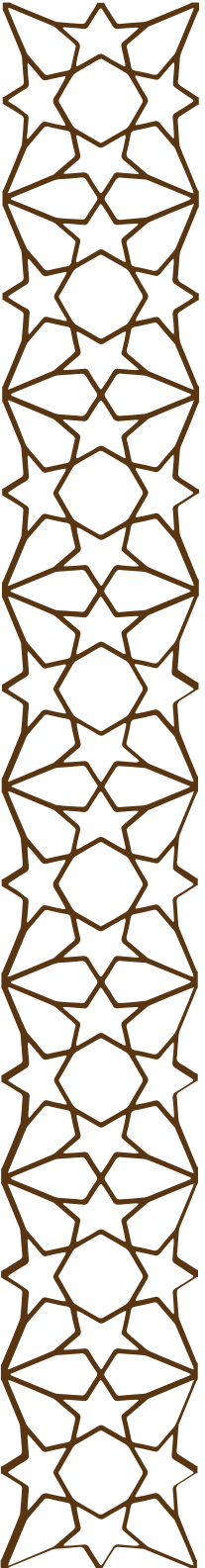




جوامع المَحْدودَة
JWAMEA LTD

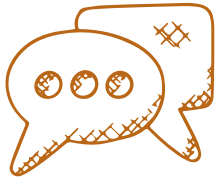
Jwamea is a company specialized in the construction and development of Masjed architecture and the company considers its main focus is the construction of Masajed

The company includes a distinguished team of engineers, technicians, supervisors and workers in all disciplines necessary to drive the project to the operating stage, and the company has obtained the satisfaction and appreciation of its customers by following professional standards for resource management and quality.



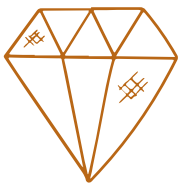
Our Vision

Excellence in the field of Masjed architecture and to be the leading company in this field using the latest standards , construction and architectural methods.



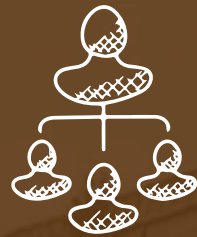
Our Mission

Building Masajed and transferring knowledge with distinguished human competencies and modern engineering and technical methods of high quality and maximizing financial sustainability by applying the highest standards of quality, safety, sustainability and cultural excellence while preserving the Islamic heritage and the privacy of the place.



Our Values

Perfection in work, credibility, transparency, honesty, commitment, continuous development.



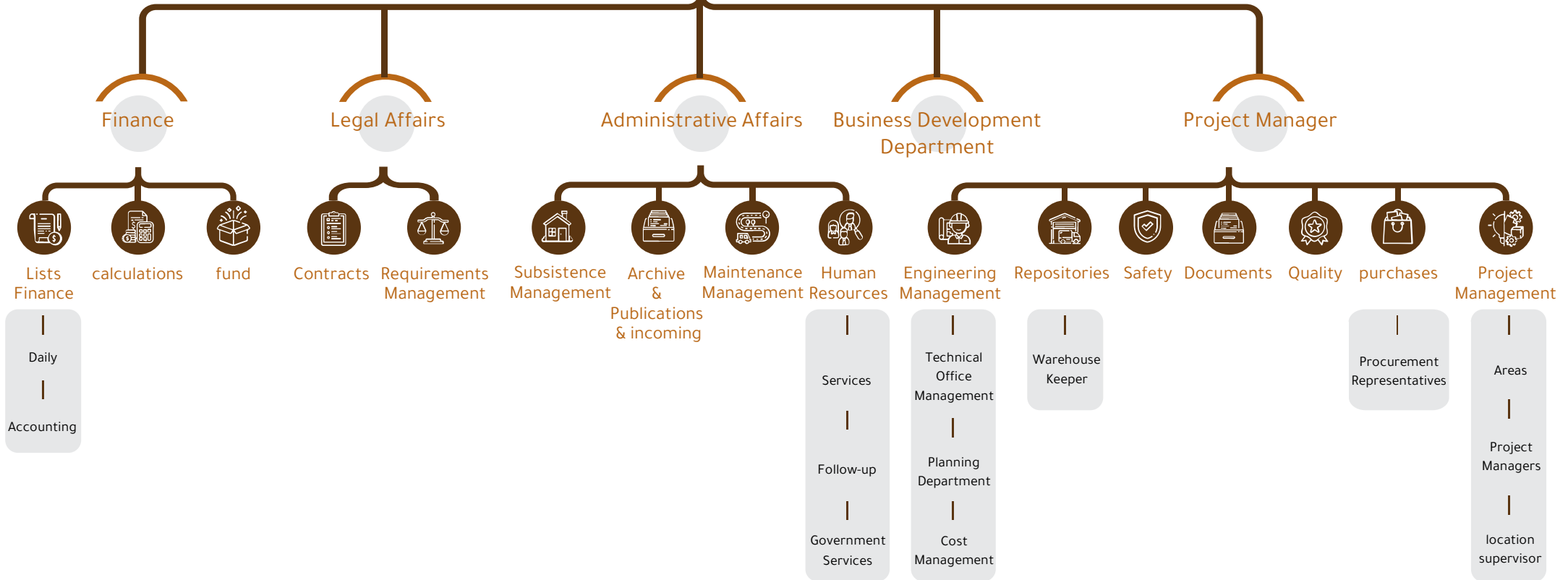
Organizational Structure



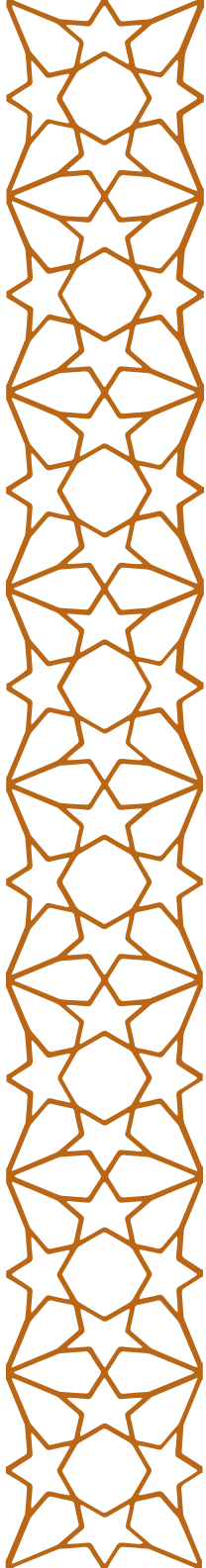
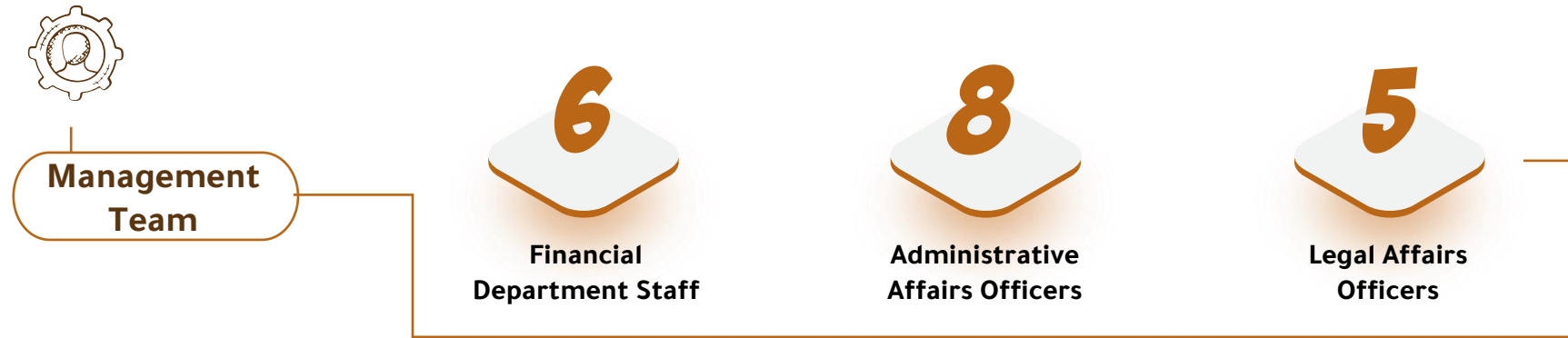
Board of Directors

president

Vice President



Jama'a Company is full of a team at the highest levels of professionalism and efficiency, working within the policies and procedures followed in the company.





Projects



Top Projects



Saudi Arabia



Central Region

31 projects

- Ⓜ Riyadh
- Ⓜ Hotat Bani Tamim
- Ⓜ Al-Kharj
- Ⓜ Buraidah



Southern Region

1 Project

- Ⓜ Jizan



Western Region

20 projects

- Ⓜ Mecca
- Ⓜ Medina
- Ⓜ Jeddah

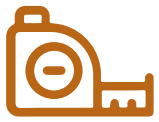


Northern Region

1 Project

- Ⓜ Amlaj

Masjed of His Royal Highness Prince Mishaal bin Abdulaziz al Saud



60m * 60m



1439 AH



Riyadh | Irqa District



Masjed Sheikh

Saleh Bin Muhammad Alabdullatif



60m*70m



1439 AH



Riyadh | Al-Arid District



Masjed of His Excellency Sheikh Dr. Ali Bin Murshid Almorshid



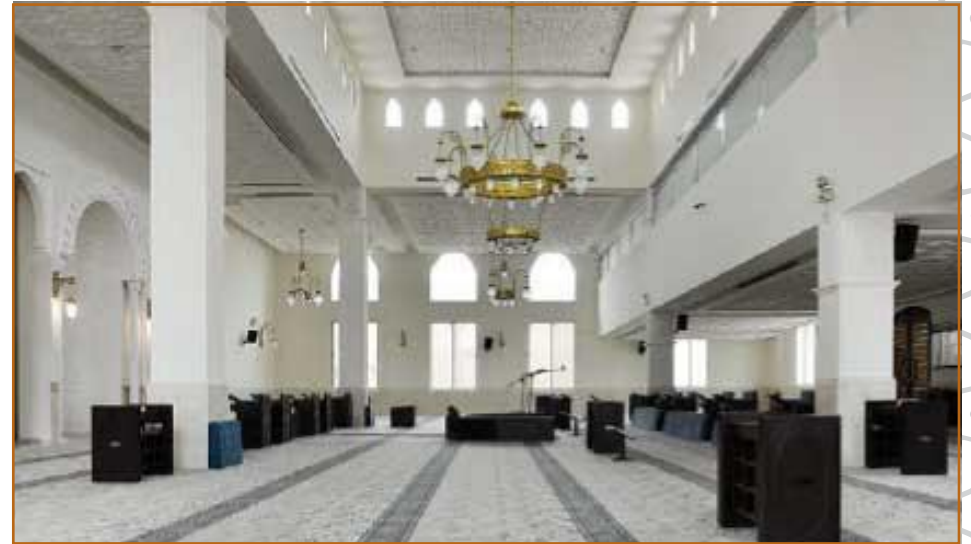
36m*24m



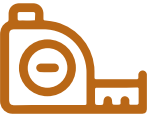
1439 AH



Riyadh | Al Qamra District



Masjed Noora Aljomaih



36m*42m



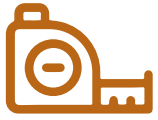
1439 AH



Riyadh | Kairouan
District



Masjed Latifa Bint Ali Alkhorayef



34m*33m



1439 AH



Riyadh | Wadi Laban District



Masjed
Dr. Nasser Aqeel Altayyar



36m*46m



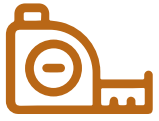
1434 AH



Riyadh | Irqa District



Masjed Al Nafee



38m*43m



1436 AH



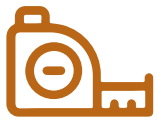
Riyadh | Al-Malqa District



Masjed

Mohammed Al-Sadhan

(may God have mercy on him)



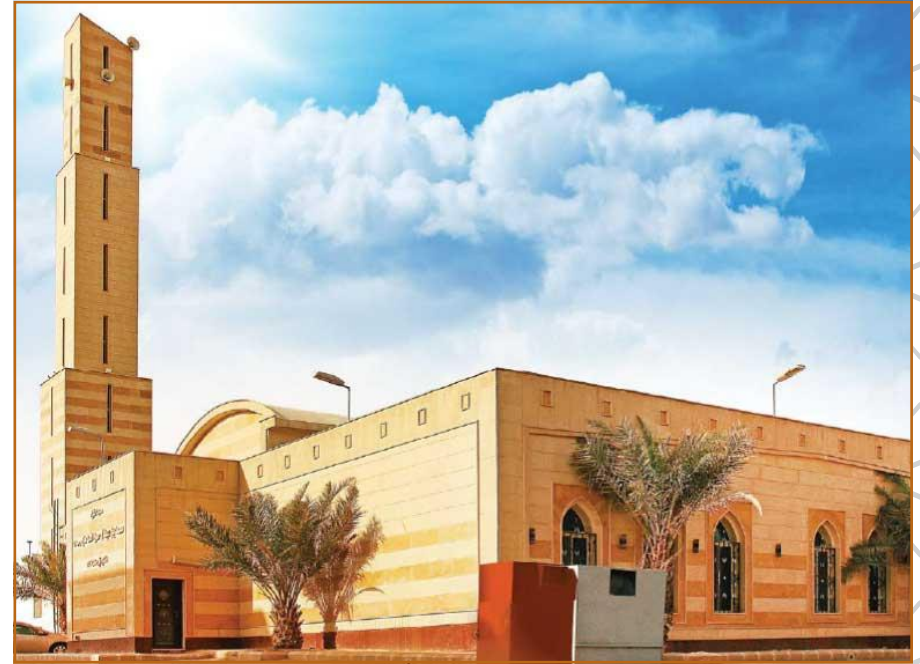
30m*25m



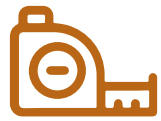
1432 AH



Riyadh | Granada District



Masjed Sheikh Al Wahaibi



48m*45m



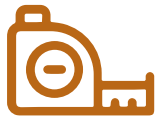
1430 AH



Riyadh | Al-Nafal District



Masjed Belsharaf



30m*28m



1430 AH



Riyadh | Al , Masif District



Masjed Osama Bin Zaid



25m*25m



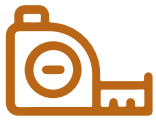
1430 AH



Riyadh | Ar Rayyan District



Masjed Khashoggi



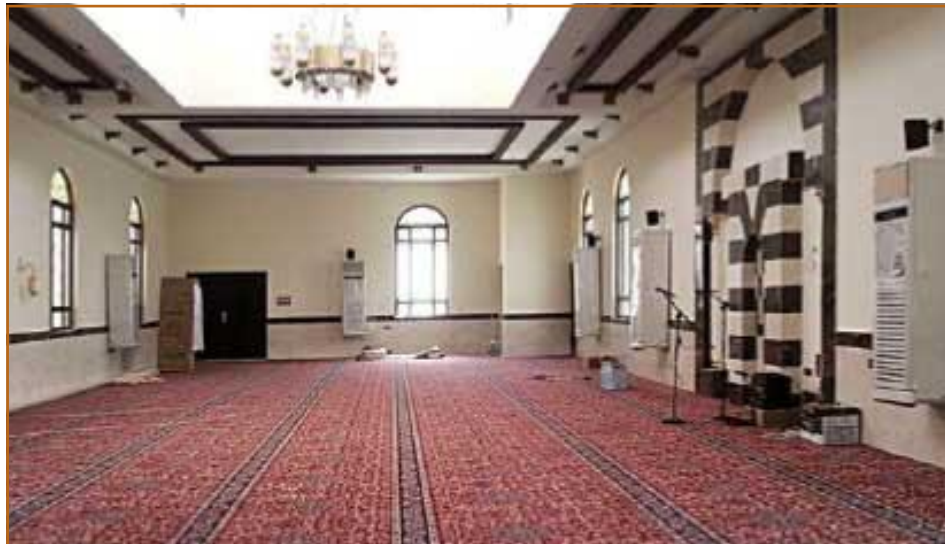
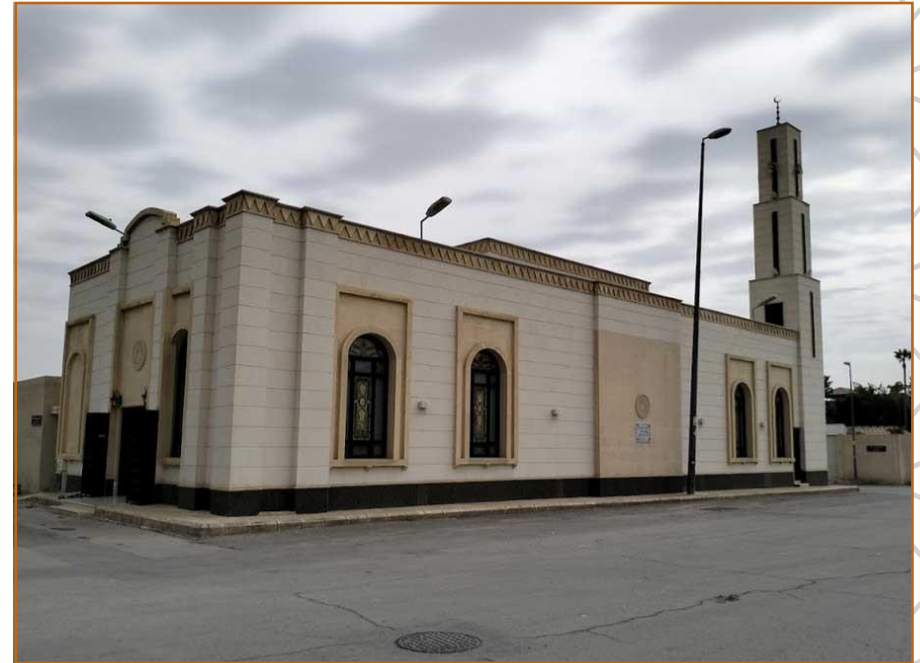
12m*28m



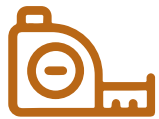
1434 AH



Riyadh | Sulaymaniyah
District



Masjed Abu Bakr Alseddiq



28m*33m



1435 AH



Riyadh | Al-Nafal
District



Masjed Dalal bint Abdulaziz Aljomaih



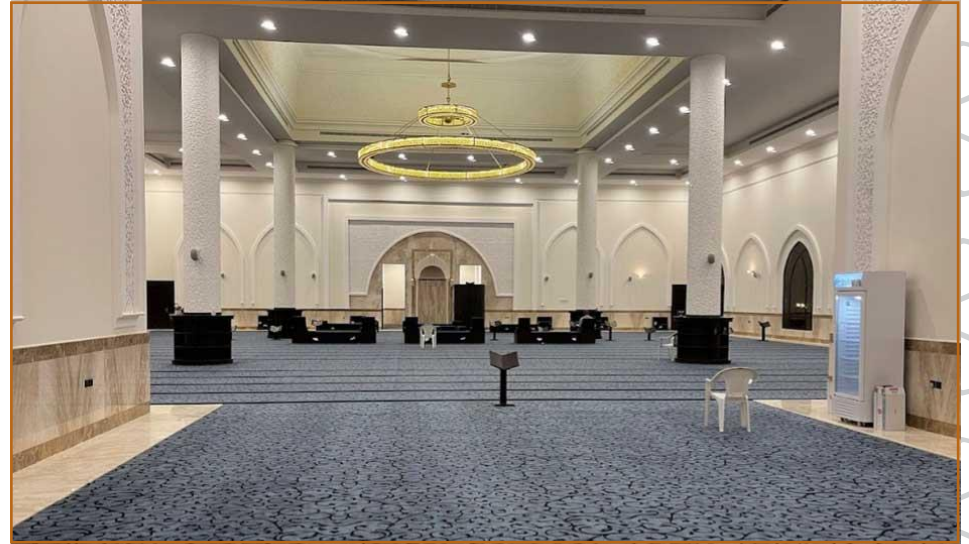
42m*36m



1440 AH



Riyadh | Narges District



Masjed Al Wallan



٣٥م * ٣٣م



١٤٤٠ هـ



Riyadh | Al-Arid District



Masjed Her Royal Highness Princess Hessa bint Mishaal bin Abdulaziz Al Saud



40m*30m



1444 AH

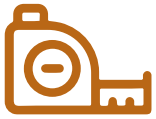


Riyadh | Irqa District



Masjed

Saleh Bin Abdulrahman Alobylan



40m*42m



1442 AH



Qassim | Buraidah



Masjed Prince Mishaal



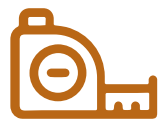
60m * 60m



1435 AH Hotat Bani Tamim | Salamiya
District



Masjed Al Amir Mishaal bin Abdulaziz al Saud



-



1435 AH



Salama Hotat Bani Tamim
District



Masjed Al Rehab



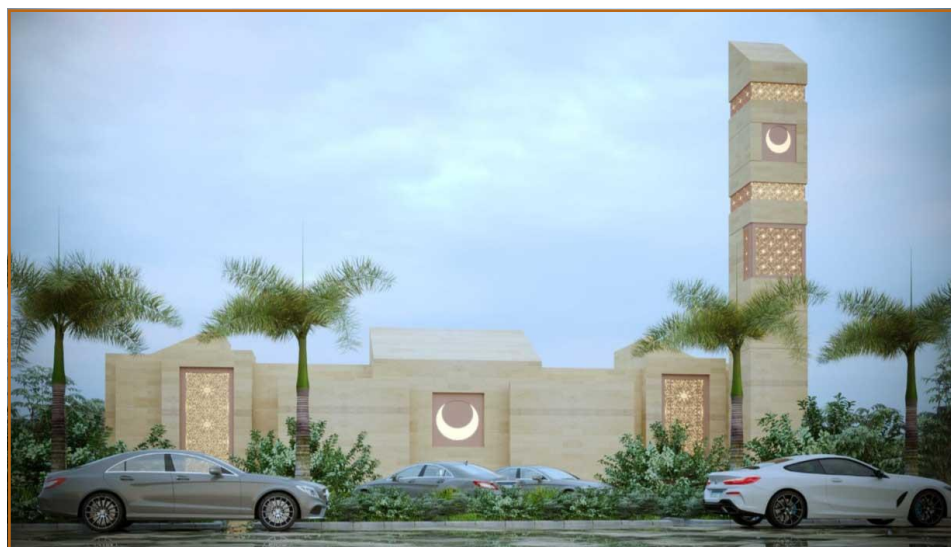
١٨ * ٢٨ م



١٤٤٤ هـ

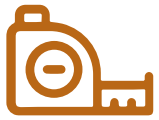


Jizan



Masjed Sheikh Muhammad bin Suleiman Al-Manea

(may God have mercy on him)



40m * 17m



1439 AH

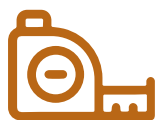


Makkah | Al-Ma'isam District



Masjed Sheikh Muhammad Bin Suleiman Almanea

(May Allah have mercy on him)



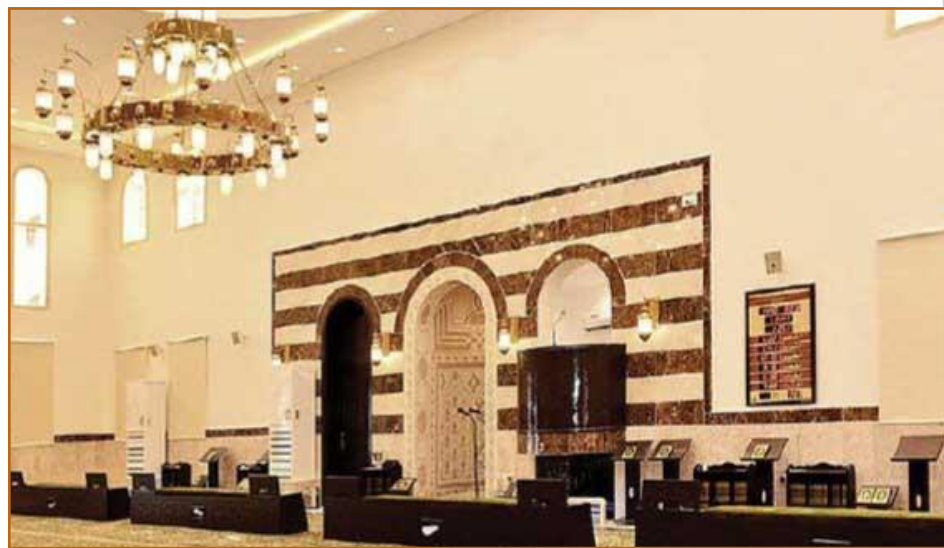
25m * 20m



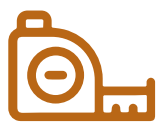
1440 AH



Makkah | Al-Shara'a
District



Masjed Al Torry



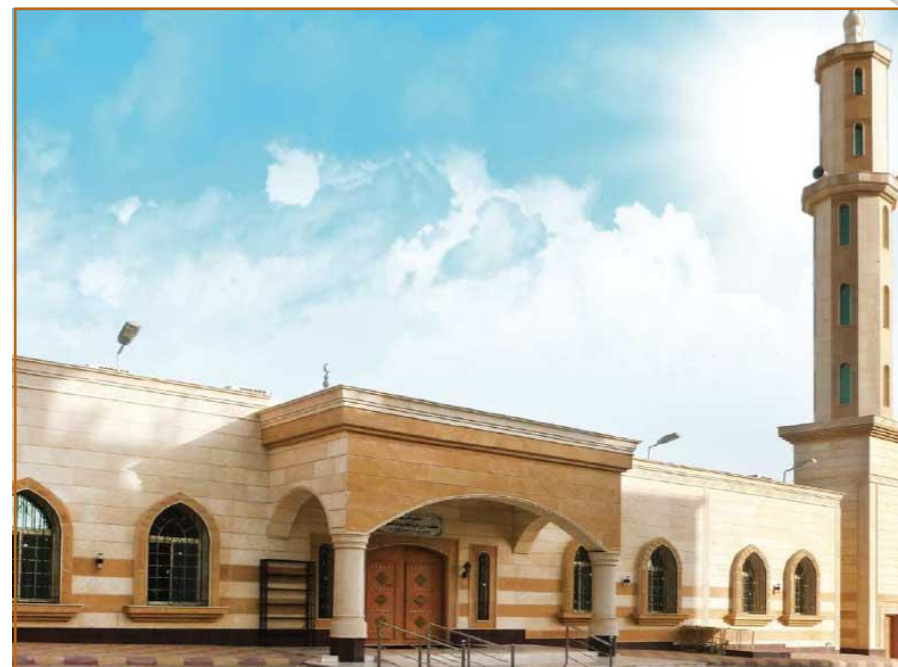
35m*40m



1435 AH



Makkah | Al-Asila District



Masjed Saad Bin Moaz



28m * 30m



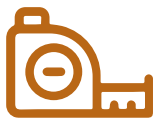
1433 AH



Makkah | Jabal al-Nour
District



Masjed Al Forqan



-



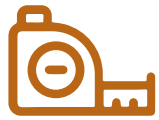
1444 AH



Holy Mecca



Masjed Al Tayar



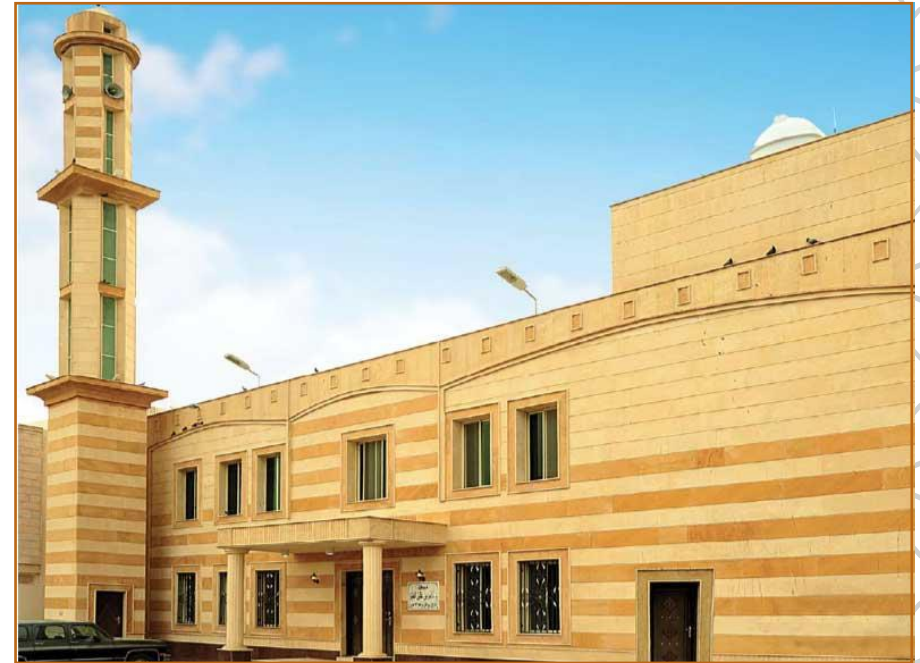
35m*35m



1434 AH



Makkah | Al-Asila District



Masjed Al Thani



35m*37m



1434 AH

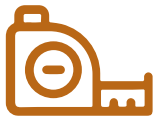


Makkah | Azizia District



Masjed Sheikh Muhammad Alsadhan

(may Allah have mercy on him)



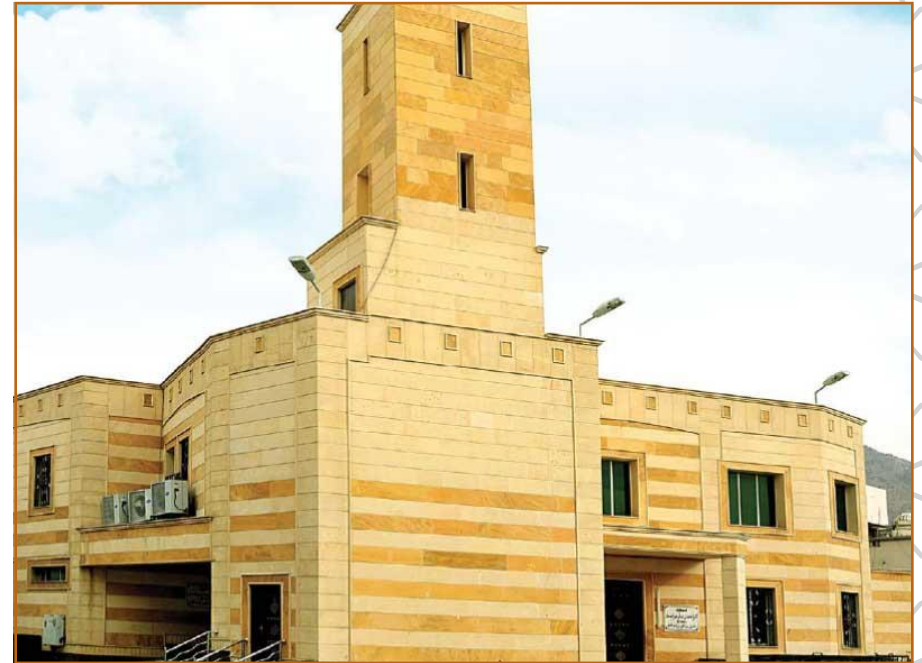
34m*34m



1434 AH



Makkah | District Washing
Machine



Masjed Al Bahili



28m*17m



1440 AH



Makkah | Batha Quraish



Masjed Sheikh Saleh Al , Rajhi



-

-

Makkah | Batha Quraish



Masjed of His Royal Highness Prince Sultan bin Salman bin Abdulaziz Al Saud



36m * 30m



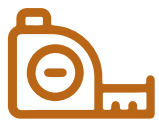
1442 AH



Between Mecca
And Medina



Masjed Farraj Alaqla



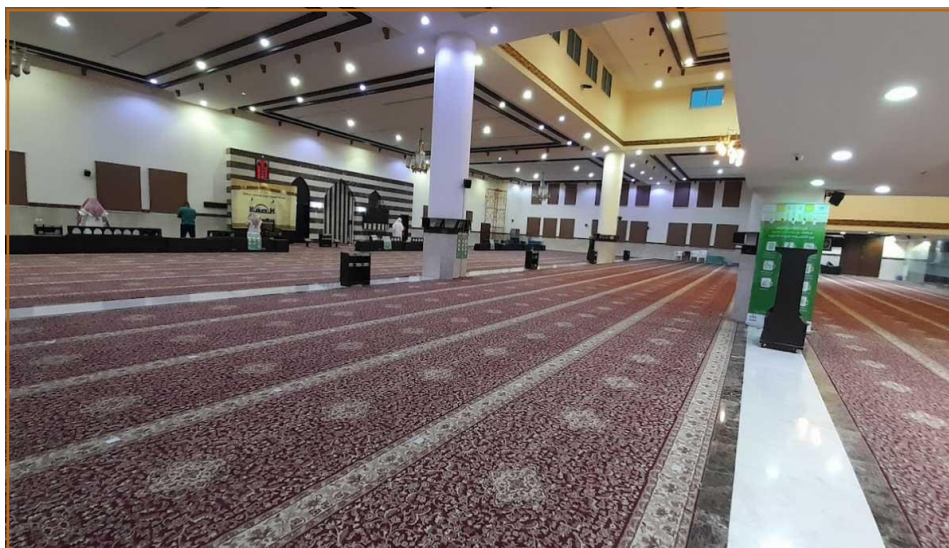
45m*45m



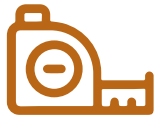
1434 AH



Madinah | Azizia District



Masjed Her Highness the Princess Sheikha bint Saud bin Abdullah Al Saud (May Allah have mercy on her)



-



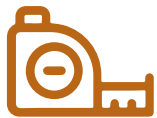
1442 AH



Jeddah City



Masjed Aisha Bint Abi Bakr



30m*50m



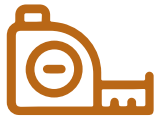
1434 AH



Jeddah | Basateen District



Masjed Omar Ibn Al-Khattab



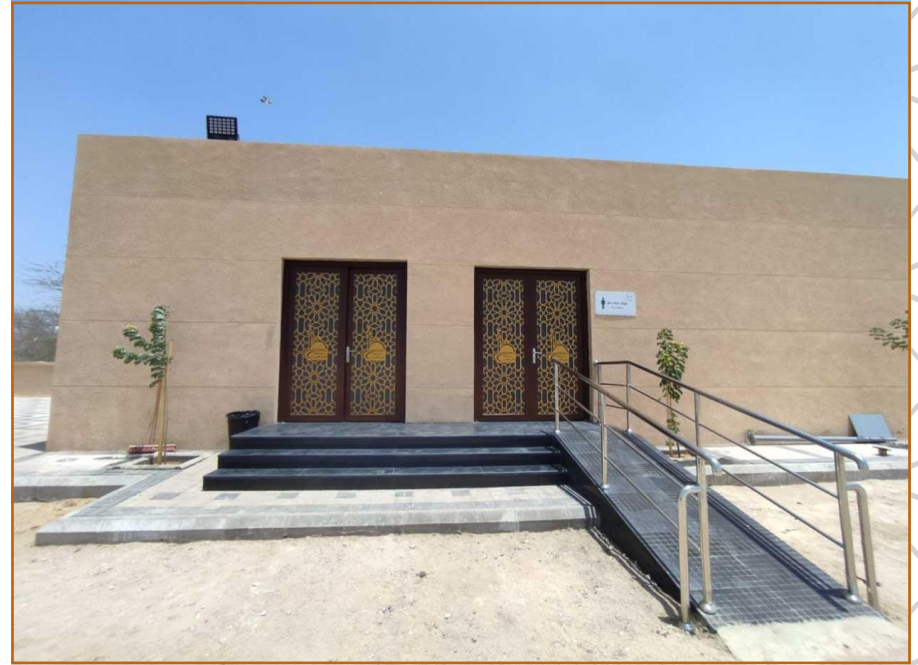
-



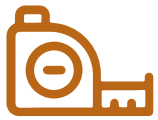
1443 AH



Jeddah City



Masjed Othman Bin Affan



-



1442 AH



Amlaj





**Project Quality
Implementation
Procedures**



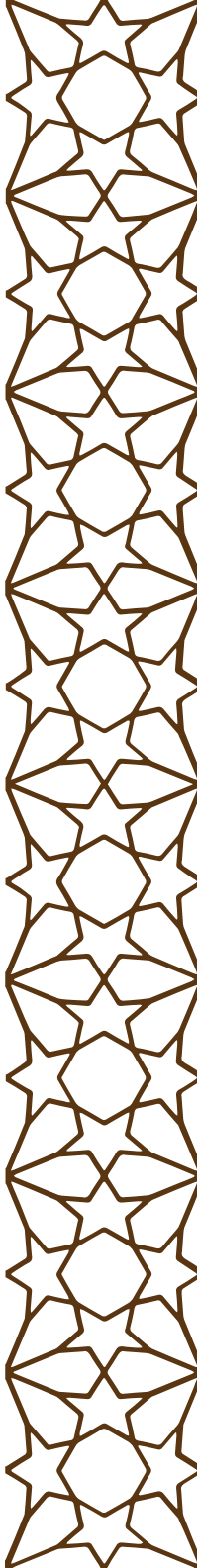
Quality Trends and Requirements

The Trends

- ✧ Customer satisfaction: The top priority at Jwamea is that we have great goals to ensure that our services are provided at a high level of quality along with continuous improvement, which is our core value.
- ✧ High quality: comes as a result of diligent monitoring, measurement and evaluation to translate this knowledge into daily practices
- ✧ Maintaining public safety: We are always keen to implement projects with the lowest percentage of accidents, so within our practices and culture is the safety of all workers in our projects.
- ✧ Environmental safety inside and outside projects.

Requirements

- ✧ Acceptable levels of security and safety at the work site.
- ✧ Protecting the environment from pollutants that may result from the works at the project site.
- ✧ Supporting quality management with technical cadres for the success of quality control tasks and assurance.
- ✧ Separation between quality control work and all coordination or follow-up work.





Scope of Quality Management System

Examination and inspection

- ✧ Inspect and test the materials and works carried out and compare them with the
- ✧ specified specifications.

Make modifications and redesign if necessary in case of non-conformity.

Quality Control and Assurance

- ✧ Establishing methods to follow up the planning, implementation and management of audits and material examination.
- ✧ Measuring differences from standards according to plans, specifications and technical conditions.
- ✧ Issuing reports on the results of studies and clarifying deviations from the correct standards.
- ✧ Make the right decisions for negative differences to reduce them to the minimum permissible and acceptable limits that do not affect the safety aspects.
- ✧ Plan to improve standards and increase conformity with them.
- ✧ The consultant is responsible for following up the quality control and assurance carried out during the standard studies and preparing the design plans for the project.

Quality Management Procedures

Control of documents and records

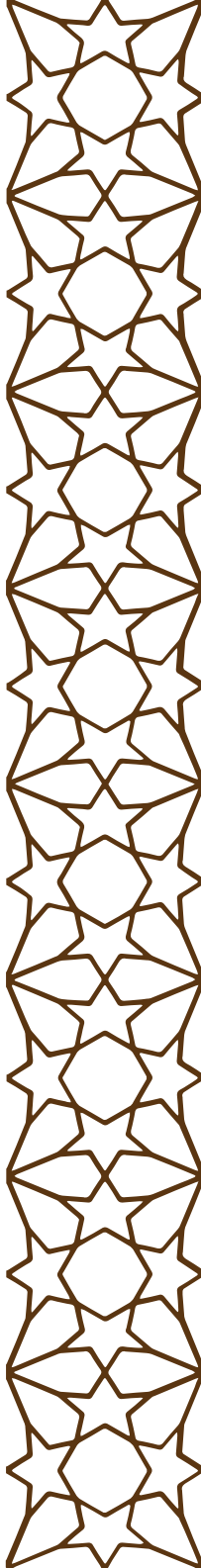
- ✧ All paper documents are preserved, distributed to files with indexes, and kept in the file room.
- ✧ Provides adequate protection for these files in order to protect them from damage.
- ✧ Documents within files are organized according to geographic, chronological or other distribution.
- ✧ Digital copies of important documents are preserved and on which the stamp and signature of the project manager appear.

Business check

- ✧ Review the received design plans and ensure that they conform to the required specifications and drawings.

Quality Reports

- ✧ The quality engineer follows up the deliverables of the project in accordance with the approved quality plan and submits monthly quality reports to the quality department of the technical support team, explaining the quality position of the project according to the approved models and on time.





Environmental Protection Plan



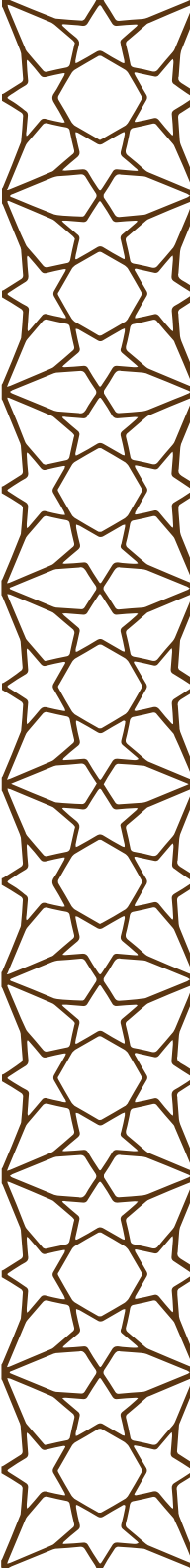


Environmental protection and waste arrangement

- ✧ Prevent and control soil, waterways and groundwater contamination before they are transported to the site, as we conduct an inspection of equipment containing a liquid system including, but not limited to, bulldozers, rear cranes, bobcats, drilling rigs, trucks and cranes, to ensure that there are no leaks.
- ✧ And ensure that hoses, pipes and hydraulic lines are in good operating condition.
- ✧ Store all materials indoors or otherwise protected from the weather. For exterior coating processes, reduce overspraying, and use fabrics/blanks/packaging to contain them. Sandblasting waste and paint chips from paint removal processes.
- ✧ Petroleum products stored in quantities exceeding 500 liters must be appropriately marked and have a secondary containment capable of preventing any leakage into the drainage system or environment.

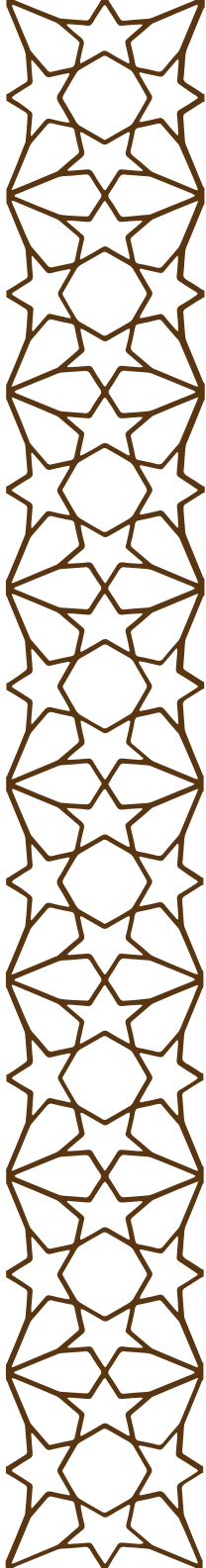
Corrosion prevention and sediment control

- ❏ Manage excavated soil and rotted materials in a way that protects the environment.
- ❏ Covering stacked materials to prevent erosion and/or install appropriate sediment controls or other soil management near a sewer system, storm system, waterways, or the different drainage.
- ❏ All erosion prevention measures and sediment controls (silt fencing, hay bales, fishing troughs, etc.) must be in place and approved by the manager prior to commencement of land clearing, excavation, road construction, etc. Sediment barriers such as silt and straw fencing should be bales fixed in trenches and not sturdy.
- ❏ Provide temporary or permanent modification of the gradient of the surface topography (soil or slate walls, sediment retention basins, etc.) in order to reduce the flow of storm water into or out of excavated or disturbed areas. All erosion and sediment control measures shall be maintained throughout the life of the project and removed upon completion of the project, and appropriate measures taken to restore the area to its previous condition.



Spill prevention and control

- ✧ Report all spills immediately to managers and must notify the Environmental and Waste Management Services Division, who will notify the appropriate regulatory agency.
- ✧ All waste from the clean-up process must be packaged, transported and disposed of by an authorized party. During extended periods (eg, overnight) of non-use, construction equipment must be placed on top of impermeable surfaces to minimize release into soil.
- ✧ Waste Management On-site containers and/or transported vehicles will be provided for excess property for rescue, mass waste, sanitary/industrial waste, and construction/demolition debris.
- ✧ Waste minimization principles must be incorporated into all activities to ensure the greatest environmental benefits and to minimize future liability for the waste that is generated.
- ✧ Characterization methods and procedures must be used by all parties to the contract to ensure that waste characteristics are known and appropriately recorded during all phases of the waste management process.





Health and Safety Management Plan

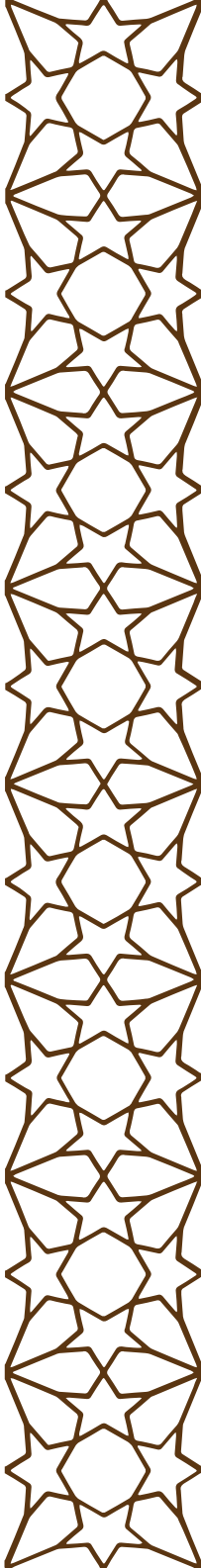


Target

- ✧ The plan aims to define rules, guidelines and processes designed to help protect all parties to the project from harm.
- ✧ Sets minimum requirements to ensure compliance with health, safety and environmental legislation, relevant codes of practice and industry standards.
- ✧ The plan will explain the rules for monitoring and improving performance in relation to health and safety to all parties to the project at work and environmental protection.
- ✧ Describe the distribution of responsibilities at all levels of the project.
- ✧ Describe the analysis, advice and review tools on HSE issues.

Communication System

- ✧ The purpose of the HSE communication system is to provide management, supervision and personnel with up-to-date information regarding site-wide HSE requirements and issues. Equally important, the communication system provides the opportunity to share, improve and raise awareness of health, safety and environment for all employees.



Policies

The Health, Safety and Environment Policy is committed to achieving safe, healthy, injury-free and environmentally sound work. The project management team must be aware of this and ensure the well-being of the general public, employees and environmental sustainability, the policies that Jama'a considers to be of paramount importance are:

- ✧ Observance of health and safety at work and respect for the environment are as important as the economic performance of projects.
- ✧ Prevent exposure to risks in all areas of its endeavors.
- ✧ Reduce any adverse effects of processes on the environment. To achieve these goals of safe, healthy, injury-free and environmentally sound work.
- ✧ Establish and adopt a health, safety and environmental management system and programs at all levels.
- ✧ Teaching and understand the HSE system, plans and practices for all project staff and other persons involved in activities where there is a chance of personal injury/illness or harm to the environment.
- ✧ Implement all environmental health and safety policies, procedures and plans and preventive measures.
- ✧ Teaching HSE management system, plans and programs to ensure continuous improvement in saving and keeping the environment safe and healthy.
- ✧ Continuous development and implementation of the management plan to control the risks associated with the work.
- ✧ Ensure that HSE policies, procedures and practices are compliant with legislative and industry requirements, standards and the concept of best practices.
- ✧ Develop and implement training programs to ensure that employees, supervisors and managers are familiar with and understand HSE principles, policies and procedures.
- ✧ Organizing an effective emergency and casualty management plan.

Policies



Top Suppliers



Architectural Department

 <p>الفنار alfanar</p>	 <p>S.C.C.S.C.D Saudi Canadian Company Contracting Decoration</p>	 <p>شركة الهدبانية للتجارة Al-Hadbania Trading Co.</p>	 <p>ARCHITECTURAL DOORS</p>	 <p>مجموعة عصام خيري قباني Isam Khairi Kabbani Group</p>	
ALFANAR ALUMINUM	Saudi Canadian Company	AL HADBANIA	ARCHITECTURAL DOORS	ISAM KABBANI & PARTNERS	
 <p>DMC</p>	 <p>شركة البركة للصناعة والمقاولات Al-Barakah Company For Industry & Construction</p>	 <p>alpha-id RFID Solutions & Services</p>	 <p>الوسائل AL WASAIL</p>	 <p>آرتك ARTIC Concrete Glamour</p>	
DRY MORTAR COMPANY (DMC)	Al-Barakah Company	ALPHA WORKS	AL WASAIL AL HADITHA EST	ARABIAN TILE CO	
 <p>AL DAOUR FACTORY FOR METAL INDUSTRIES</p>	 <p>مجموعة الجذور Roots Group</p>	 <p>NOSOOO Contracting & Metal Works للمقاولات والتعمال المعدنية</p>	 <p>راماة Ramah</p>	 <p>MIDDLE EAST AL-HADITHA AL-HADITHA AL-HADITHA</p>	
AL DAOUR FOR METAL INDUSTRIES	Roots Group Arabia	Nosool Est Company	RAMAH Aluminum	Middle East	
 <p>مصنع لتكنولوجيا المعادن METALS TECH FACTORY</p>	 <p>شركة المكاتب AL MAKATEB</p>	 <p>رغدادان RAGHADAN PAINTS</p>	 <p>سهم SAHAM</p>	 <p>الخزف السعودي Saudi Ceramics</p>	
METALS TECH FACTORY	AL MAKATEB CO LTD	Raghadan Paint	SAHAM	Saudi Ceramics	
 <p>JANA PAINTS TRD EST</p>	 <p>SMC Interiors</p>	 <p>نافكو NAFCO</p>	 <p>Lamar L. L.C. شركة لامر المحدودة</p>	 <p>INDEX SAUDI ARABIA</p>	 <p>RIMCO</p>
JANA AL RIYADH	SMC INTERIORS	NAFCO	LAMAR	Index Saudi Arabia	RIMCO

Mechanical Department



AL KAWH AL SAUDI CORP.
مؤسسة الكوّن السعودي

Al Kawen Al Saudi



NATIONAL MARKETING EST. CO. LTD.
شركة المؤسسة الوطنية للتسويق المحدودة

NATIONAL MARKETING EST. CO. LTD



مجموعة المتبولي المتحدة
United Matbouli Group

United Matbouli Group



شركة الفوزان القابضة
AL FOZAN HOLDING CO.

Al -fozanSocial Foundation



Schindler

SCHINDLER



WETICO
ونتيكو

WETICO

SAMSUNG

SAMSUNG



عجلان و اخوانه
Ajlan & Bros.
Holding القابضة

AJLAN



دسر
DUSSUR

DUSUR CO.



saudicast
Since 1972

SAUDI CAST



Zamil
Group

ZAMIL



alitco
اليتكو

ALITCO




خزفية
CASAVIA

casavia

Electrical Section

				
Al Kawen Al Saudi	Saudi Media Systems	ELECTRIC House	National Lighting Company - NLC	
				
SETRA	SLC	Saudi Powertec	HESHAM EL SEWEDY TRADING	AL ABDULKARIM holding company

Civil Section

				
RANCO & ZAMIL	HILTI	ATTA BASES CONTRACTING EST	MASCO	
				
T. NAGADI PREFORMED	Wardat A1 Khozama	GEOTECHNICAL	ETE Readymix	Arabtec Construction Machinery



**Samples of
subcontractors
and engineering
offices**



Engineering Offices

						
Studio paradigm	Studio five	Shewekar studio	Dome Al Omran Engineering Consultancy Office	Distinguished Experts Engineering Consultancy Office	Qattan Engineering Consultancy Office	Support Office For Engineering Consultancy

					
Ghazi Abbas Engineering Consultants Office	Eslob Engineering Consultancy Office	Sajal Arabia Engineering Consultants Office	Engineer Samir Abu Ghalia Engineering Consultants Office	Cass Engineering Consultancy Office	Fawzi Talal Soleimani Office For Architecture

Subcontractors



Jabal Damak Contracting Est



Farhan Al Khalidi Contracting Est



Rasm Bayani Contracting Company



Al Azm Construction & Development Company



Vision Buds Contracting Company



Sana Creative engineering solutions and services



Aluminum Technology Company for Metal Industries



Kirby Company


Jwamea Ltd. Company





جَوَامِعُ المَخْدُودَةُ
JWAMEA LTD



 www.jwame.com

 info@jwamea.com

 +966505358030

 Riyadh, Saudi Arabia